



A Global Perspective of Your Displays

Take the guesswork out of hardware health and performance with the SmartVu® Portal, a secure, cloud-based remote management tool that provides comprehensive information into the status of BoldVu® displays.

A web-based management tool, the SmartVu® Portal provides the unique ability to view individual displays, adjust system settings, create alerts and watchlists and open support tickets from anywhere you can access the internet.

SmartVu® Portal comprises a powerful suite of tools designed to manage your entire network of BoldVu® displays all from a single web interface.



SmartVu® Portal

Global Perspective

A secure, cloud-based web interface to view all your networked displays, in one convenient location.

Reporting Dashboard

Real-time overview of display performance across your entire network, with smart filters and report exports.

Display Stats

View near real-time performance parameters on a display by display basis.

Display Event Logs

Indication when displays call home with an issue, viewable at the network and display level.

Support Ticketing

Submit tickets directly to the Network Operations Center immediately engaging the 24 Hour Team for Support.



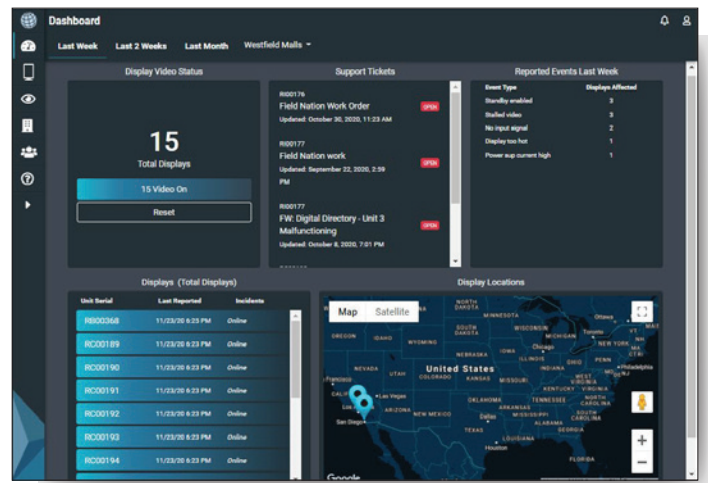
SmartVu® Portal

SmartVu® Portal is a web-based monitoring tool that provides visibility into the status and configuration of BoldVu® displays. Use SmartVu® Portal to view network status, access historical performance data, review incidents, and submit support tickets.

Dashboard

The dashboard provides a global overview of all BoldVu® displays in your SmartVu® Portal account. At a glance you can see a number of important pieces of information including:

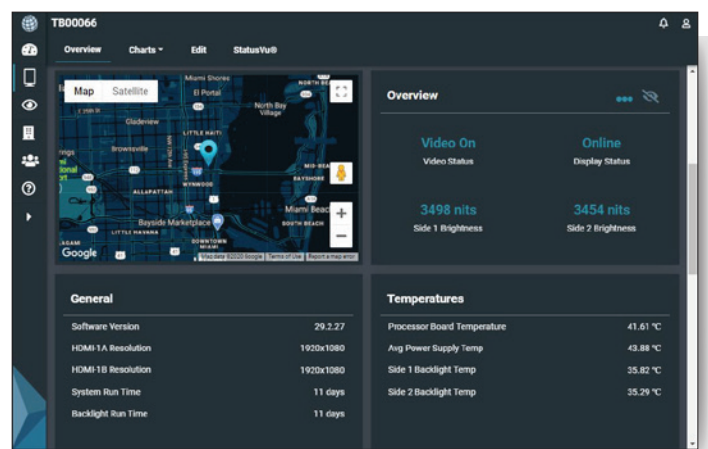
- Display Video Status
- Support Tickets
- Reported Incidents
- Display Serials & Last Reported Timestamp
- Display Geolocations



Display Overview

Drill down on any serial number and you will see the display overview page. On this page is information that gives an overall indication of display health and performance, including:

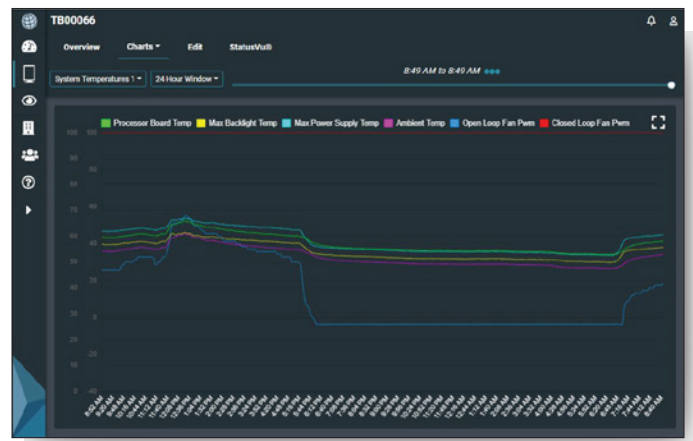
- Display Video Status
- Connectivity Status
- Display Brightness (per digital face)
- Board Temperatures
- System Run Time



Sensor Charts

Dive deep into sensor data to view display performance in context of its operating environment. Was the weather extraordinarily hot? How did the display manage the heat? View graphical reports for a variety of parameters, including:

- System Temperatures
- Display Brightness
- Power Supply Performance
- Weather Data, Brightness, & Power Draw
- Ambient Temperatures & Fan Utilization



Support Ticketing

When an incident is logged or when you receive a report of vandalism, use the Support Ticketing tool to submit a ticket to MRI global customer support and begin the remediation process in minutes. Report various problems, including:

- Part Failure
- Video Playback Error
- Connectivity Problems
- Touchscreen or Camera Errant Behavior
- Vandalism

Display Settings Adjustment

Get even more granular data via the StatusVu® display management tool. View 150+ reported data points and adjust system settings including:

- Incidents and Notifications
- Firmware Updates
- Brightness & Dimming Controls
- Network Settings
- Energy Usage

BoldVu® is a registered trademark of Manufacturing Resources International, Inc. (MRI). BoldVu® is also used under license by LG-MRI LLC, a joint venture entity between LG Electronics U.S.A., Inc., and MRI; and, by Precision Systems Integration, LLC, affiliated with MRI. The information provided in this material is for general informational purposes only. All information is provided in good faith, however, Manufacturing Resources, Inc. and its affiliates make no representation or warranty of any kind, express or implied, regarding the accuracy, adequacy, validity, reliability, availability or completeness of any information appearing in this material. All information is subject to change or updates without notice.